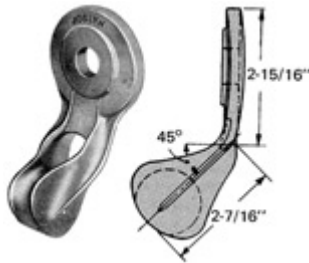


Features:

- Eyelets, also known as Bolt Eyes, are used under the head or nut of a bolt. All are compatible with the strength of the bolts used with them.
- Straight thimble eyelets are used for span guys while angle thimble eyelets are used for down guys.
- Standard eyelets are used for deadending.
- Standard eyelets and straight thimble eyelets have a slotted hole for ease in inserting the bolt.

Material:

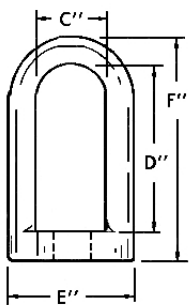
- Hot Dip Galvanized



Angle Thimbeyelet

Angle Thimble Eyelets			
Catalog Number	Bolt Diameter (Inches)	Max Strand	Weight/100 (lbs)
J6500	5/8	1/2	127

Fig. 1



BE

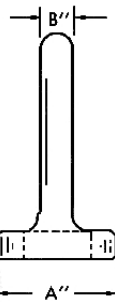
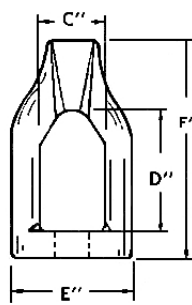
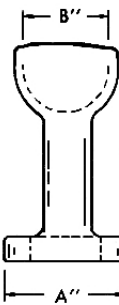


Fig. 2



TE



Catalog Number	Catalog Number (2)	Fig.	A	B	C	D	E	F	Mounting Bolt Hole	Bolt Size (Inches)	Weight/100 (lbs)
BE-5	J1126	1	2-3/8	9/16	1-1/4	3	2-3/8	4	1x11/16	5/8	
BE-6	J1127	1	2-3/8	9/16	1-1/4	3	2-3/8	4	1-1/18x13/16	3/4	

TE-5	J6550C	2	2- 3/8	1- 1/2	1- 1/4	2- 9/16	2- 3/8	4- 3/8	1x11/16	5/8	
TE-6	J6551	2	2- 3/8	1- 1/2	1- 1/4	2- 9/16	2- 3/8	4- 3/8	1- 1/18x13/16	3/4	

Notes:

www.maclepower.com

